

AVIATION STATE ENGAGEMENT FORUM	
<b>NSW, Victoria and Tasmania</b>	<b>Submission date: 22/02/2022</b>

<b>TITLE</b>	<b>Military Fleet Activity Period Two - Overwater Jervis Bay (NSW) to Bass Strait</b>
<b>SUBMITTED BY</b>	Patricia Atkinson – Joint Airspace Control Cell: <a href="mailto:adf.airspace@defence.gov.au">adf.airspace@defence.gov.au</a>
<b>CONSULTATION SUMMARY</b>	To advise AvSEF of overwater military activity in between 20 Apr – 13 May 22
<b>KEY ISSUES</b>	<ul style="list-style-type: none"> <li>• Military fixed and rotary wing operations will occur in Class G airspace</li> <li>• Aircraft will operate in accordance with Class G procedures</li> </ul>
<b>FEEDBACK TO</b>	Nil feedback required advisory information only
<b>CLOSE DATE</b>	NA
<b>ATTACHMENTS</b>	Nil

## OVERVIEW

Elements of the Australian Defence Force will be participating in a second Fleet Activity Period overwater from Jervis Bay (NSW) through to Bass Strait during the period 20 April – 13 May 2022. This will result in an increase in military aviation operations, both maritime patrol aircraft and ship-borne rotary wing, in support of Royal Australian Navy vessels. Due to the extent of objectives, specific locations cannot be accurately advised, however general areas of operation are advised.

## DETAILS

**Airspace.** Fixed and rotary wing operations will occur in Class G airspace. A Melbourne FIR (YMMM) NOTAM and AIP SUP will be subsequently published.

**Military Aircraft operations.** Military aircraft will monitor, and when necessary broadcast on, the appropriate Area, CTAF or Broadcast Area frequency relative to their location.

**Fly Neighbourly advice (FN22 Navy Warships).** In order to maintain safe operations, pilots should avoid warships by 5NM laterally or not below 2000FT vertically whenever possible, and should not circle the warship at any time.

Traffic alerts and warnings may be passed on FREQ 121.5 MHz to aircraft operating in the vicinity of warships.

## General Areas of Operation for Specified Periods

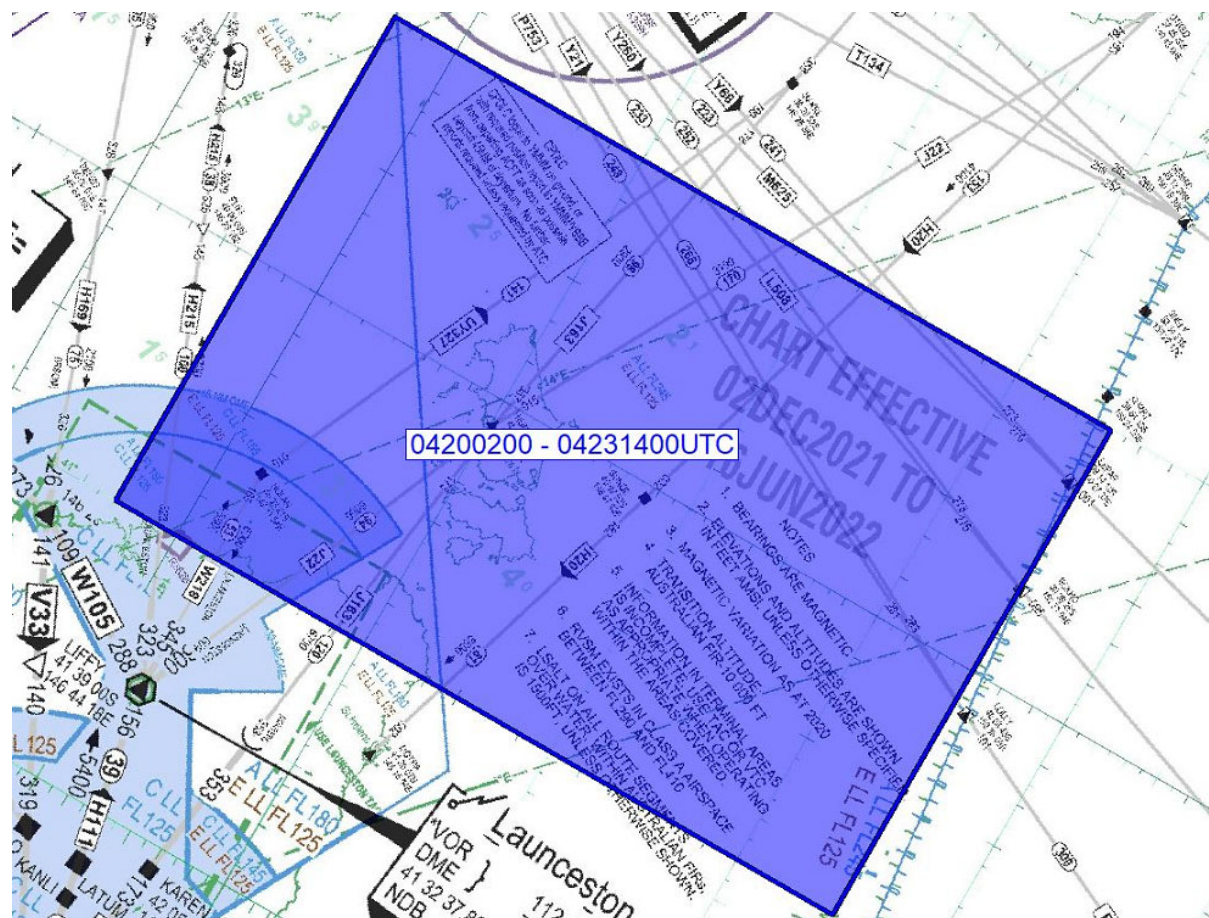
20 – 23 APR 2022 (200200 - 231400 UTC)

Area bounded by:

390000S 1464000E – 390000S 1503000E

410000S 1503000E – 410000S 1464000E

390000S 1464000E



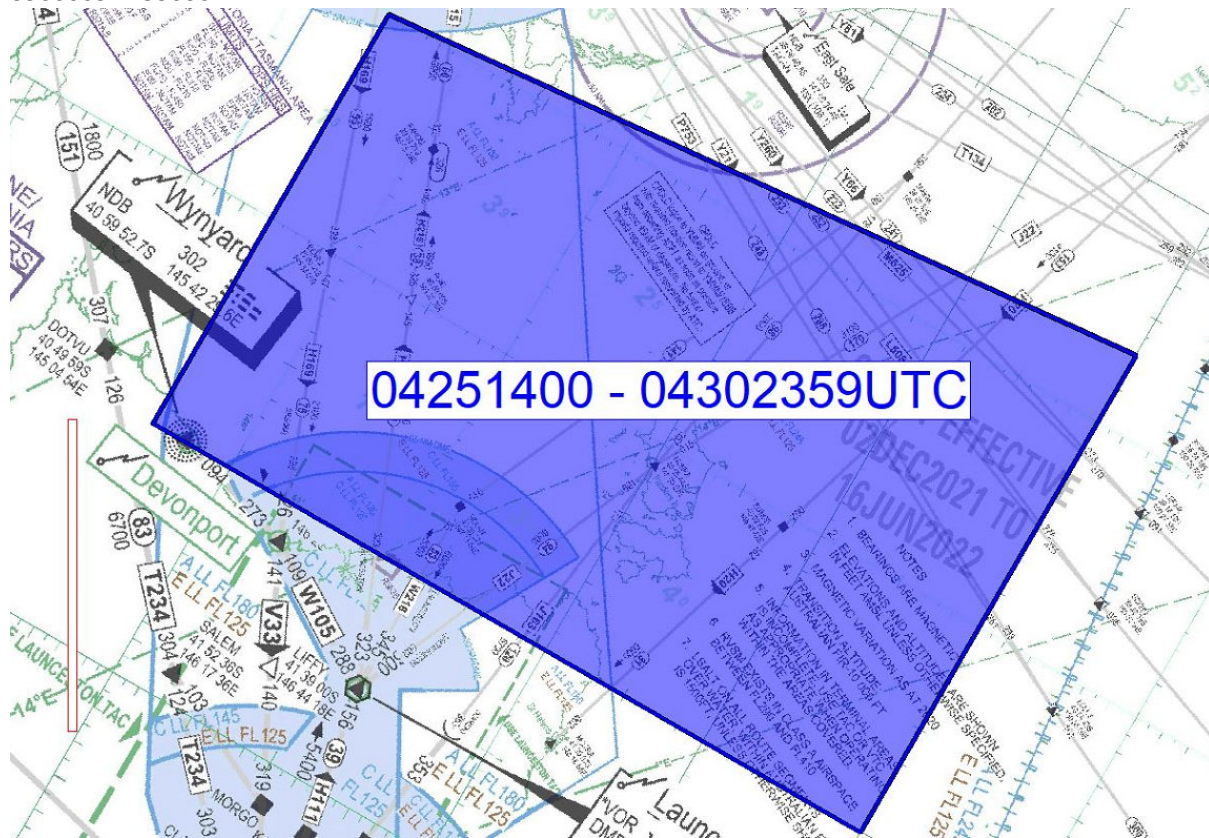
26 – 30 APR 2022 (251400 - 302359 UTC)

Area bounded by:

390000S 1453000E – 384000S 1500000E

410000S 1500000E – 410000S 1453000E

390000S 1453000E





**01 – 03 MAY 2022 (010001 - 030200 UTC)**

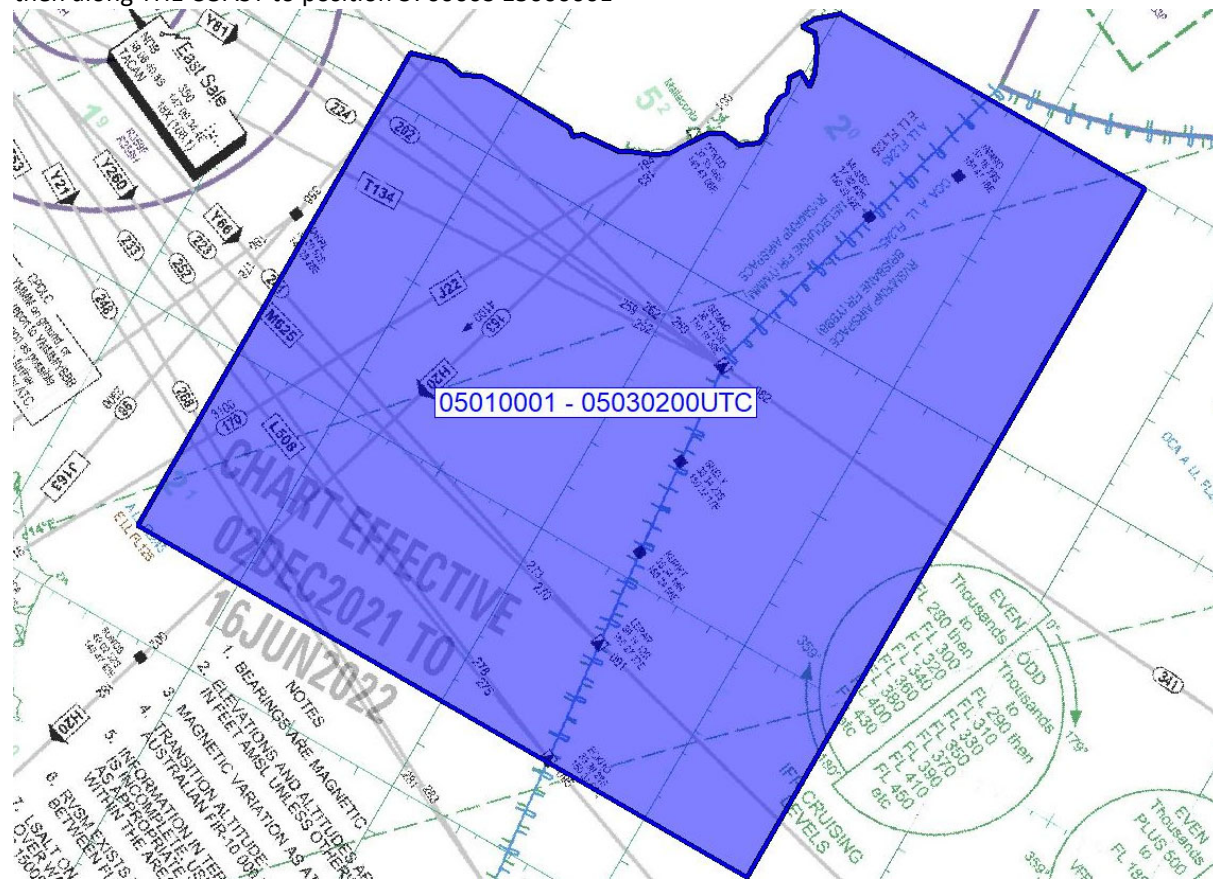
Area bounded by:

370000S 1500000E – 370000S 1513000E

394000S 1513000E – 394000S 1483000E

375000S 1483000E

then along THE COAST to position 370000S 1500000E



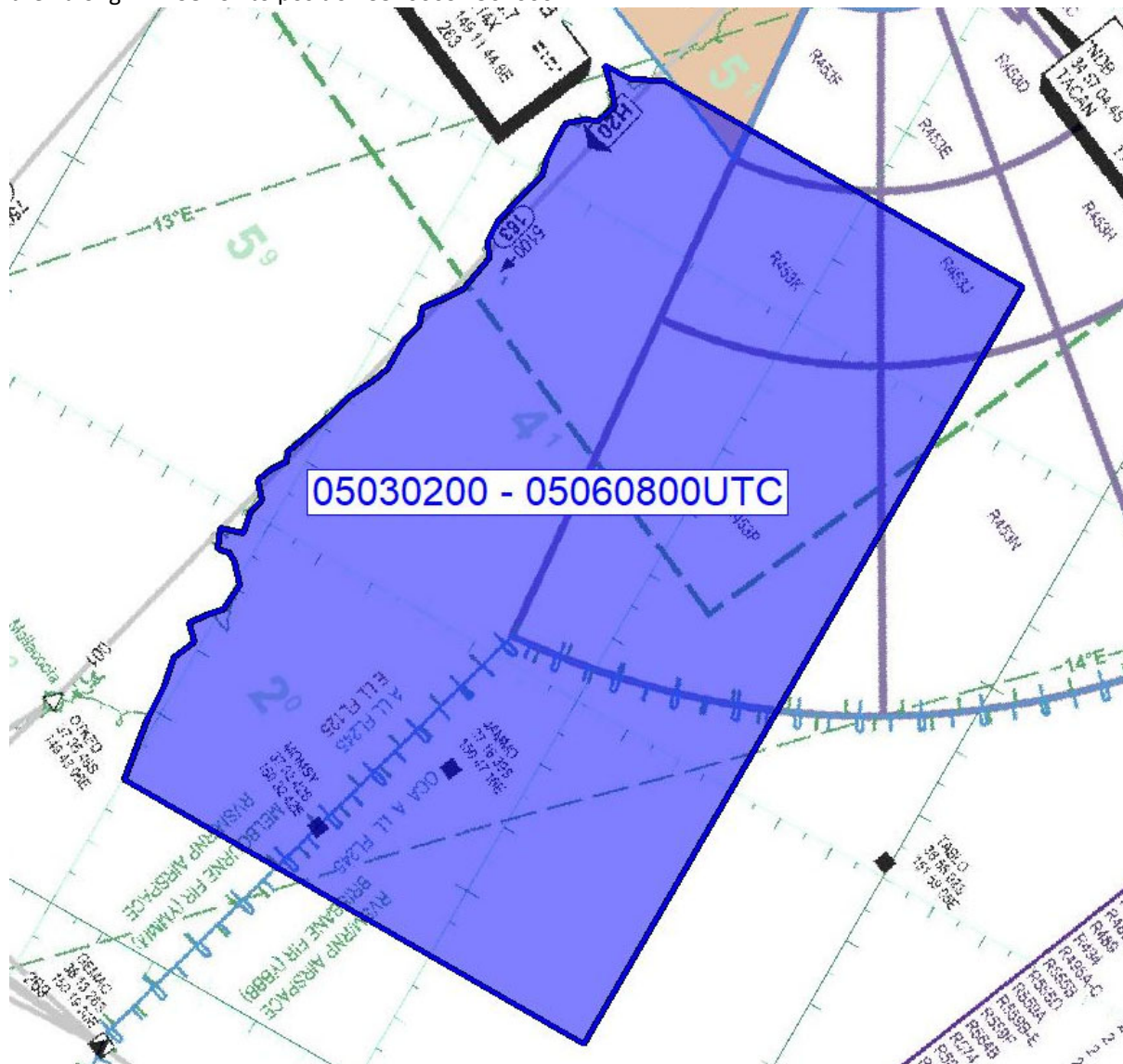
**03 – 06 MAY 2022 (030200 - 060800 UTC)**

Area bounded by:

354000S 1502000E – 354000S 1513000E

374000S 1513000E – 374000S 1500000E

then along THE COAST to position 354000S 1502000E



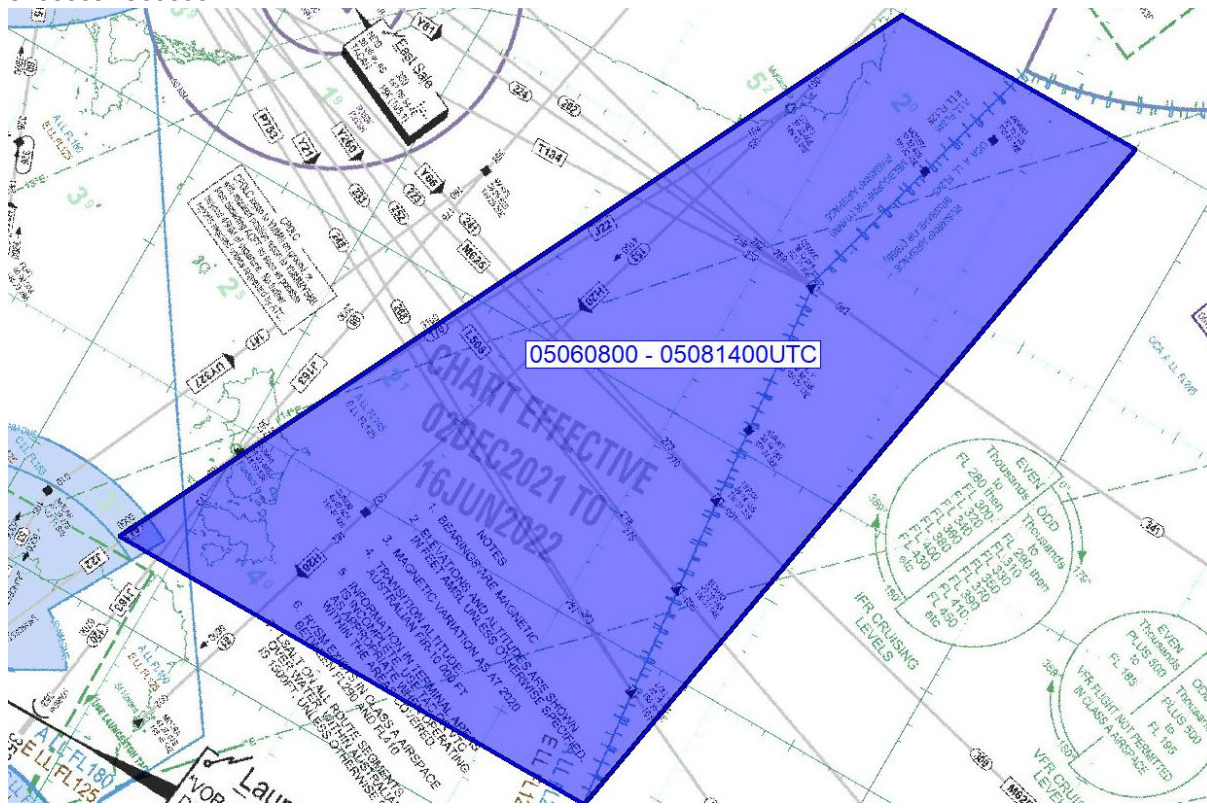
**06 – 08 MAY 2022 (060800 - 081400 UTC)**

Area bounded by:

370000S 1500000E – 370000S 1513000E

404000S 1504000E – 404000S 1474000E

370000S 1500000E





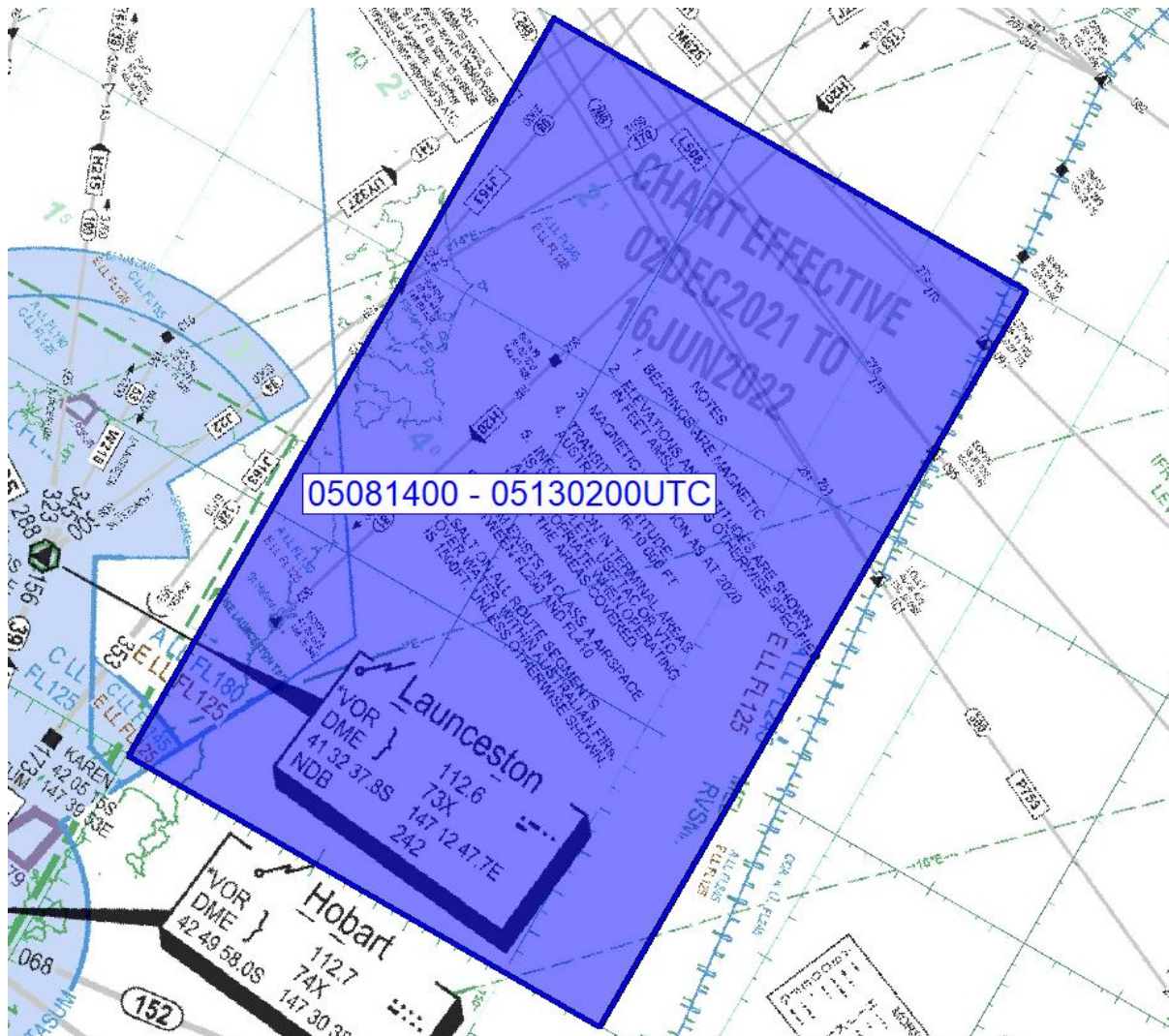
08 – 13 MAY 2022 (081400 - 130200 UTC)

Area bounded by:

390000S 1480000E – 390000S 1503000E

420000S 1503000E – 420000S 1480000E

390000S 1480000E



Prior to the activity period any queries can be directed to the Joint Airspace Control Cell at [adf.airspace@defence.gov.au](mailto:adf.airspace@defence.gov.au). Further contact details will be published via an AIP SUP for any queries during the activity period.