

AVIATION STATE ENGAGEMENT FORUM	
National AvSEF	Submission date: 06/04/2022

TITLE	ACP Launceston Airspace – addition of LL 6,500 FT step 30-36 DME
SUBMITTED BY	Mark Fineran – Office of Airspace Regulation: mark.fineran@casa.gov.au
CONSULTATION SUMMARY	The OAR is seeking input from members for a proposed change to Launceston airspace. An ACP is being prepared to introduce a new step located 30 DME to 36 DME north of Launceston. This new step will have a Class C lower limit of 6,500 FT AMSL.
KEY ISSUES	<ul style="list-style-type: none"> • Consultation will be conducted until 12 May 2021. • The change was included in the Supplementary Review: Aircraft containment Launceston February 2021 report undertaken by the OAR. • No change to air routes, air traffic management or instrument flight procedures. • Stakeholders are invited to contact the OAR to assure interaction during the consultation.
FEEDBACK TO	Mark Fineran – Office of Airspace Regulation: Proposed change to Launceston airspace - Civil Aviation Safety Authority - Citizen Space (casa.gov.au)
CLOSE DATE	12 May 2022
ATTACHMENTS	<p>Figure 1: Existing 6,500 FT lower limit CTA area for Launceston</p> <p>Figure 2: Proposed 6,500 FT lower limit CTA area for Launceston. Illustrating the change from 30 DME to 36 DME</p> <p>Airspace reviews Civil Aviation Safety Authority (casa.gov.au)</p>

Background

In February 2021, the OAR completed the [Supplementary Review: Aircraft containment Launceston](#). Part of this review analysed issues for aircraft arriving on runway 14 at Launceston when aircraft experienced high tailwinds while crossing Bass Strait. This meant aircraft were descending while the pilots were working to reduce the speed of the aircraft, prepare for landing and remain in controlled airspace. This process increased cockpit workload and reduced aircraft efficiencies.

A recommendation in the supplementary review included changing the airspace architecture to increase operational efficiencies for aircraft.

An airspace change proposal (ACP) is being considered to introduce a new step at Launceston. The introduction of the step will enable aircraft assurance of remaining in controlled airspace, increase efficiencies through continuous descent operations and cockpit workload management. There are no changes to air routes, air traffic management or instrument flight procedures.

The new step will have a lower limit of 6,500 FT AMSL. The airspace classification will be Class C.

Discussions with some stakeholders during the review process showed support for the amended step.

AvSEF Members

Tasmania and Victorian AvSEF members are invited to contact the OAR to participate in consultations and/or provide feedback in relation to the review.

Members can make contact via email to the OAR at oar@casa.gov.au or to mark.fineran@casa.gov.au. The subject line should include “**ACP Launceston 30-36 DME Step**” to assist with identification. The closing date for consultation is Thursday 12 May 2022. Should members require additional time, please contact Mark Fineran, OAR Airspace Project Specialist on 07 3144 7329 or via email.

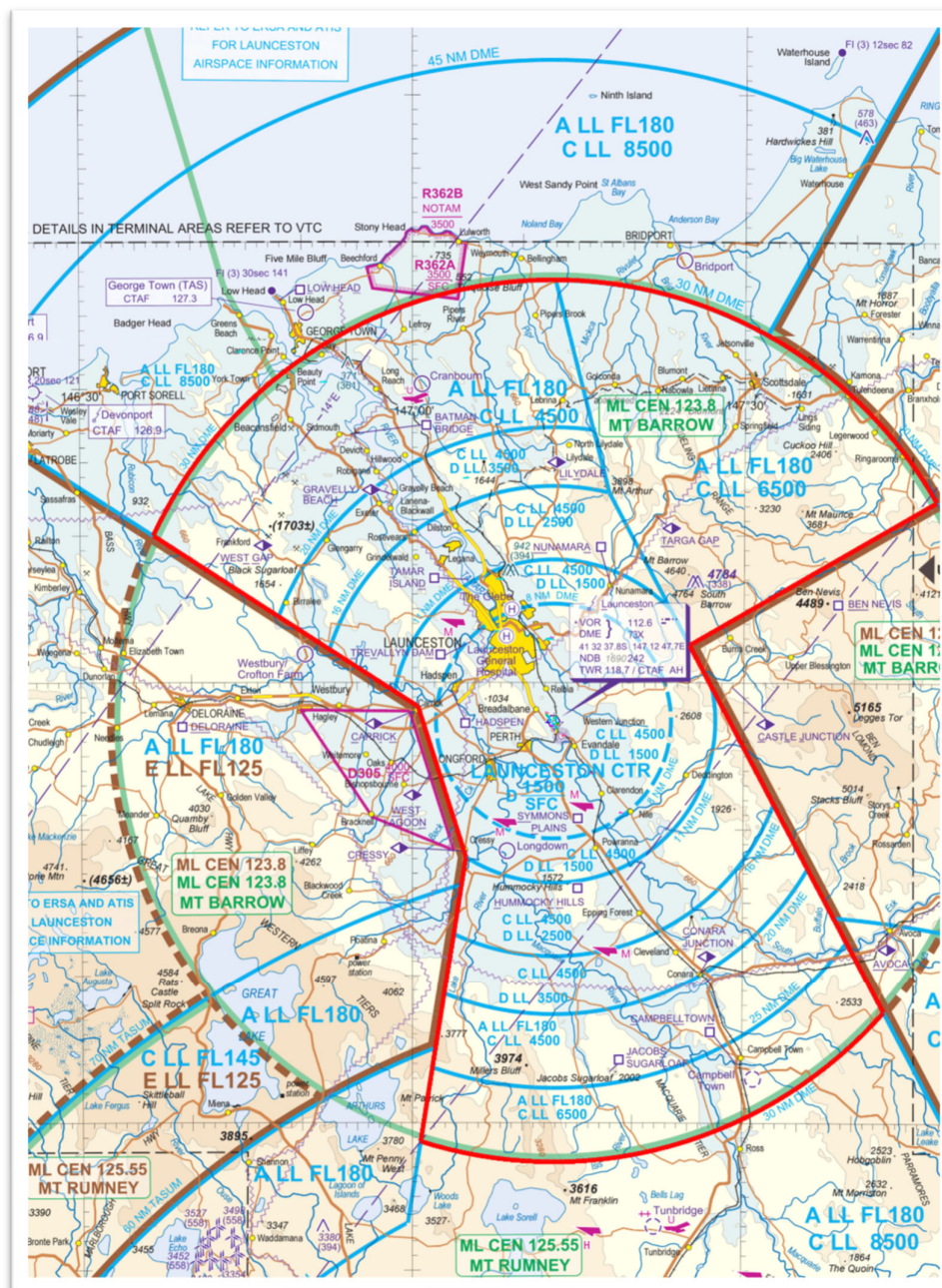


Figure 1: Existing 6,500 FT lower limit CTA area for Launceston

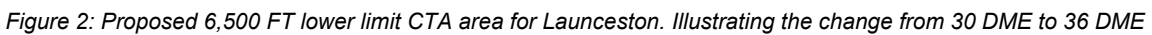


Figure 2: Proposed 6,500 FT lower limit CTA area for Launceston. Illustrating the change from 30 DME to 36 DME