

AVIATION STATE ENGAGEMENT FORUM	
Queensland	Submission date: 16/06/2022

TITLE	<i>Kinchant broadcast area CTAF (Common Traffic Advisory Frequency)</i>
SUBMITTED BY	Northern Queensland working party – a subcommittee of the Queensland AvSEF
CONSULTATION SUMMARY	The Kinchant broadcast area is a trapezoid shape of Class G airspace in the Pioneer Valley to the west of Mackay, from ground level up to A035. The designated VHF frequency is 132.05 MHz which is unique to the area. In recent years, general aviation and recreational aircraft have migrated from Mackay Airport to airstrips within the broadcast area, and there are now two fixed-wing flying schools based in Mackay that use the area for training. To improve aircraft-to-aircraft communication in the Pioneer Valley, this proposal considers either extending the area further west to include an airstrip at Finch Hatton <i>YFHA</i> , or removing the broadcast area altogether and reverting the whole area to the generic CTAF 126.70 MHz.
KEY ISSUES	<ul style="list-style-type: none"> • The Kinchant broadcast area was created in 2015 at the same time as broadcast areas for the Cassowary and Capricorn Coasts. In the consultation proposal, traffic levels in the Kinchant area were expected to increase. Stakeholders now report that traffic is significantly less than expected and have questioned whether the broadcast area is justified. • Chartered airstrips in the Kinchant broadcast area include Palmyra <i>YPYA</i>, Turtle Park <i>YTPK</i>, and Marian <i>YMRI</i>. Further west, a chartered airstrip at Finch Hatton <i>YFHA</i> has been upgraded. For consistent aircraft-to-aircraft communication, there is merit in having all airstrips in the Pioneer Valley on the same frequency. This can be achieved by expanding the existing broadcast area, or by removing it completely. • This proposal should be read in conjunction with another AvSEF proposal which is considering changing the Proserpine broadcast area CTAF from 126.70 MHz to a unique (discrete) frequency. Any additional traffic load on 126.70 MHz in the Pioneer Valley would be offset by the Proserpine broadcast area changing to its own discrete frequency. Depending on what is actually implemented, either AvSEF proposal can affect the traffic loading on 126.70 MHz in the Class G airspace to the north and west of Mackay.
FEEDBACK TO	Trevor Bange – Industry Convenor for Queensland AvSEF: trevorbange@bigpond.com
CLOSE DATE	Sunday, 10 July 2022
ATTACHMENTS	Map extracts showing: <ol style="list-style-type: none"> 1. the Kinchant broadcast area and chartered airstrips in the Pioneer Valley, and 2. other broadcast areas near the Kinchant broadcast area.

OVERVIEW

CASA's Office of Airspace Regulation (OAR) routinely conducts airspace reviews at locations around Australia. The last airspace review involving the Mackay area was in February 2019 and made the following recommendations:

- *OAR recommends the existing airspace classification and airspace architecture remains unchanged. The OAR considers the airspace and subsequent supporting ATC services fit for purpose;*
- *The current Class C airspace over Class D airspace at Rockhampton and Mackay during tower hours is appropriate and fit for purpose and is recommended to remain as published; and*
- *The current Class C airspace over Class E airspace for Rockhampton and Mackay outside tower hours is appropriate and fit for purpose and is recommended to remain as published.*

The review did not comment on the Class G airspace or broadcast areas next to the Mackay control zone.

At the time of the airspace review:

- there were declining aircraft movements at Mackay (and Rockhampton);
- there was no justification for an airspace change based on occurrences reported to the ATSB;
- there was only one fixed-wing flying training organisation based at Mackay; and
- upgrades to the airstrip at Finch Hatton had not been completed, a Y-code had not been allocated, and it did not appear on aeronautical charts.

In the table on page 1, the *Key Issues* section highlights why the broadcast area was created, the current traffic density, the benefit of having traffic in the Pioneer Valley on the same frequency, and the influence of the Proserpine CTAF on 126.70 MHz to the north. Changing the Kinchant broadcast area – either by extending or removing it – would address the problems identified.

Expansion option

If endorsed by the aviation community and approved by CASA, an expanded Kinchant broadcast area would affect the following:

- *All aircraft* – any manned or unmanned aircraft landing, taking off, transiting or conducting aviation activities within Class G airspace in the Pioneer Valley up to A035 would use the broadcast area's discrete CTAF of 132.05 MHz. Outside of the broadcast area the frequency would continue to be 126.70 MHz in the vicinity* of a charted aerodrome, and elsewhere it would be the FIA 128.55 MHz.
- *At private airfields* – all pilot broadcasts at charted airstrips in the Pioneer Valley would use the broadcast area's discrete CTAF 132.05 MHz.
- *Charts in the AIP suite* – includes the VTC for Mackay, VNCs for Townsville and Rockhampton, TAC-2 Mackay, and ERC L4 Brisbane/Townsville.

Removal option

If endorsed by the aviation community and approved by CASA, removal of the Kinchant broadcast area would affect the following:

- *All aircraft* – any manned or unmanned aircraft landing, taking off, transiting or conducting aviation activities within Class G airspace in the Pioneer Valley would use the generic CTAF of 126.70 MHz when at or in the vicinity* of the four charted airstrips located there. When not in the vicinity* of a charted airstrip, the frequency would continue to be the FIA 128.55 MHz.
- *At private airfields* – all pilot broadcasts at and in the vicinity* of charted airstrips would use the generic CTAF of 126.70 MHz which would encompass much of the Pioneer Valley.
- *Charts in the AIP suite* – includes the VTC for Mackay, VNCs for Townsville and Rockhampton, TAC-2 Mackay, and ERC L4 Brisbane/Townsville. Turtle Park YTPK's entry in ERSA will require amendment.

PROPOSAL

This proposal is about extending the size and shape of the existing Kinchant broadcast area, or completely removing it. The rationale is described above. The aviation community is invited to consider the proposal and nominate one of the selections below (A, B, or C). *Please provide reasons for your choice and any variations that you consider viable.*

- ☐ **A: Leave** the size, shape and frequency of the Kinchant broadcast area unchanged; *OR*
- ☐ **B: Expand** the size and shape of the Kinchant broadcast area to the west to include Finch Hatton YFHA – the broadcast area would then contain all four charted airstrips in the Pioneer Valley to the west of Mackay: Palmyra YPYA, Turtle Park YTPK, Marian YMRI, and Finch Hatton YFHA; *OR*
- ☐ **C: Remove** the Kinchant broadcast area altogether, so the frequency reverts to 126.70 MHz in the Pioneer Valley to the west of Mackay in the vicinity* of the three charted airstrips currently in the broadcast area: Palmyra YPYA, Turtle Park YTPK, and Marian YMRI.

This additional selection is optional:

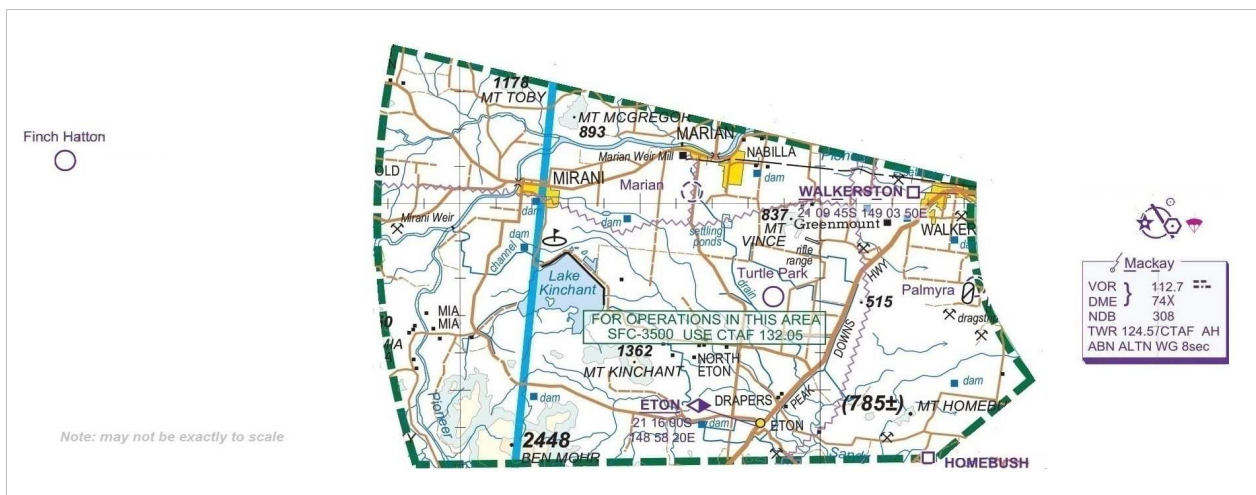
- ☐ **Option D:** The selection above would be enhanced if the Proserpine broadcast area changes its CTAF from 126.70 MHz to a discrete frequency – this would mean traffic in the Pioneer Valley would not hear traffic overhead on approach to the Proserpine broadcast area.

* **In the vicinity:** Civil Aviation Safety Regulation 91.360 defines when an aircraft is “in the vicinity” of a non-controlled aerodrome – (a) in uncontrolled airspace, and (b) within 10 nautical miles of the aerodrome, and (c) at a height above the aerodrome that could result in conflict with operations at the aerodrome.

ATTACHMENT 1

This extract from the Visual Terminal Chart (VTC) for Mackay shows the current size and shape of the Kinchant broadcast area in the Pioneer Valley to the west of Mackay. The broadcast area has three charted aerodromes – Palmyra *YPYA*, Turtle Park *YTPK*, and Marian *YMRI* – all are uncertified. The uncertified airstrip at Finch Hatton *YFHA* is further west. There is one VFR waypoint shown within the broadcast area and two waypoints are on the edge.

- Within the Kinchant broadcast area, the Common Traffic Advisory Frequency (CTAF) is currently 132.05 MHz.
- At Finch Hatton *YFHA*, the CTAF is currently 126.70 MHz.
- To contact Air Traffic Services, the primary frequency within the broadcast area is 128.55 MHz, with 135.50 MHz also available.



This extract from the Visual Navigation Chart (VNC) for Townsville shows the three other broadcast areas (BAs) near the Kinchant broadcast area. The BAs are within the **green** dashed lines.

