

VS03 Launch | Temporary Restricted Areas

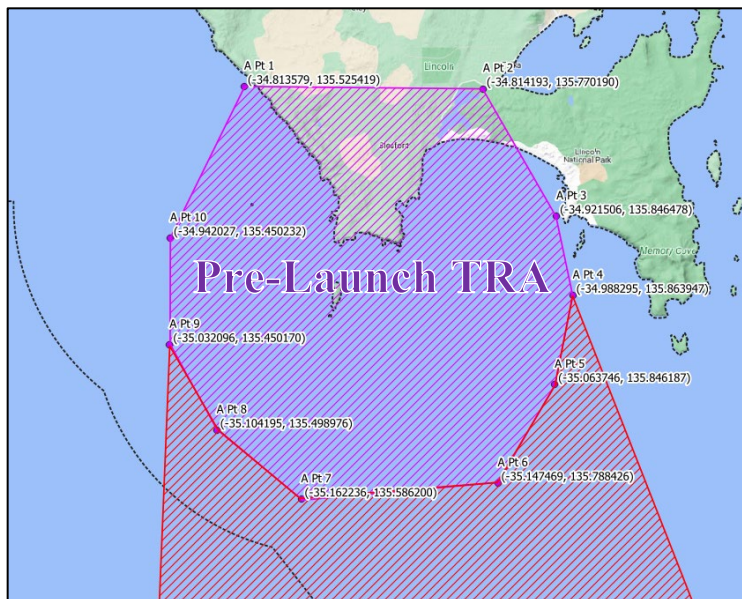
A series of temporary restricted areas (‘TRAs’) will be in place to support airspace safety during the VS03 rocket launch from the Whalers Way Orbital Launch Complex in Sleaford, SA 5607. Aircraft will be required to observe airspace restrictions during notified periods on launch day.

The launch is scheduled to occur between 12 and 23 November 2023. Please see the Southern Launch website for schedule updates <www.southernlaunch.space> and direct any queries to Eamon Lawson at: eamon.lawson@southernlaunch.space

Pre-Launch TRA

A Pre-Launch TRA will be enforced around the launch site from approximately T-4 hours on launch day. Southern Launch will be the controlling authority of the Pre-Launch TRA.

Details of the activation window(s) will be promulgated in a notice to airmen (‘NOTAM’) the day before launch.

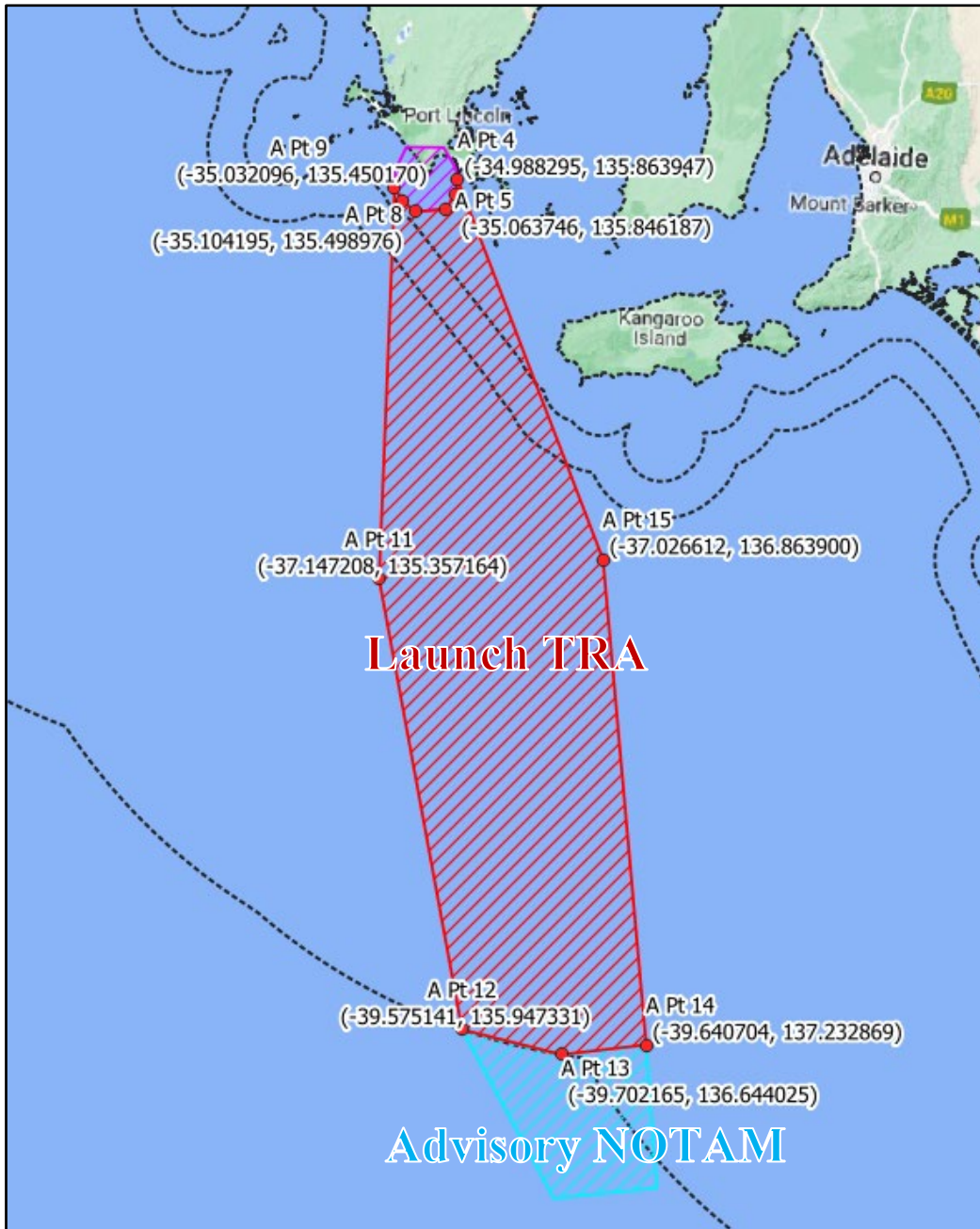


Pre-Launch TRA Coordinates		
Name	Latitude	Longitude
A Pt 1	-34.8136	135.5254
A Pt 2	-34.8142	135.7702
A Pt 3	-34.9215	135.8465
A Pt 4	-34.9883	135.8639
A Pt 5	-35.0637	135.8462
A Pt 6	-35.1475	135.7884
A Pt 7	-35.1622	135.5862
A Pt 8	-35.1042	135.4990
A Pt 9	-35.0321	135.4502
A Pt 10	-34.9420	135.4502

Launch TRA

A Launch TRA will extend along the rocket’s flight path and augment the Pre-Launch TRA from T-30 minutes. Southern Launch will be the controlling authority from sea level to 12,500 ft; Airservices Australia will be the controlling authority above 12,500 ft.

Details of the Launch TRA activation window(s) will be promulgated in a NOTAM the day before launch. Regular safety broadcasts will be made on the Port Lincoln CTAF Frequency [126.7 MHz] from T-60 minutes.



Launch TRA Coordinates		
Name	Latitude	Longitude
A Pt 4	-34.9883	135.8640
A Pt 15	-37.0266	136.8639
A Pt 14	-39.6407	137.2328
A Pt 13	-39.7021	136.6440
A Pt 12	-39.5751	135.9473
A Pt 11	-37.1472	135.3571
A Pt 9	-35.0321	135.4502

Advisory NOTAM Coordinates (Beyond EEZ)		
Name	Latitude	Longitude
N Pt 1	-39.5751	135.9473
N Pt 2	-39.7021	136.6440
N Pt 3	-39.6407	137.2328
N Pt 4	-40.4103	137.3336
N Pt 5	-40.4787	136.6085