

AVIATION STATE ENGAGEMENT FORUM	
Queensland	Submission date: 14/05/2020
TITLE	AMENDMENT to Military Activity at Northern Peninsula Airport and in Torres Strait
SUBMITTED BY	Joint Airspace Control Cell – adf.airspace@defence.gov.au
CONSULTATION SUMMARY	To inform AvSEF of an updated proposed short notice Temporary Restricted Areas (TRA) Bamaga and TRA Cape York, for activation in support of military activity between 12 June and 30 Sep 2020. Due to unforeseen circumstances, this AvSEF Paper cancels the previous submission on 08 May 20.
KEY ISSUES	<ul style="list-style-type: none"> • The previous TRAs Torres Strait and Arafura are cancelled and the current proposal consists of only TRA's Bamaga (amendment) and Cape York (new). • Procedures and timings remain the same in which TRA's will be activated by night (1830-0630K) to minimise impact on civilian traffic. • A military controlling authority will be located at Northern Peninsula Airport to facilitate civilian access through the TRA's, if required.
FEEDBACK TO	FOR ATTENTION: FLTLT Matthew Brown Joint Airspace Control Cell adf.airspace@defence.gov.au
CLOSE DATE	21 May 2020
ATTACHMENTS	<ul style="list-style-type: none"> • Figures 1 and 2 - TRA Bamaga and TRA Cape York • Updated AIP SUP Draft

DETAILS OF AMENDMENT

Due to unforeseen circumstances, the previous airspace proposal submitted on the 08 May 20 had to be amended at Bamaga and in Torres Strait. Previously requested Temporary Restricted Areas (TRA) Torres Strait and Arafura have been removed and now the new proposal consists of an amended TRA Bamaga (upper vertical limit only) and a new TRA named TRA Cape York. The dates (12 Jun-30 Sep 20), daily expected timings (1830-0630 local) and civilian access procedures remain the same.

OVERVIEW

A military flying activity is being conducted from Northern Peninsula Airport (Bamaga) and Torres Strait during 12 June – 30 September 2020. TRA's will be established to ensure the safety of civilian and military air traffic.

The activity will be conducted by night to minimise the impact on civilian traffic. Expected timings of activation for TRA's Bamaga Cape York are 1830-0630K (0830-2030Z); however, pilots should monitor NOTAMs for accurate timings.

The conditional status of TRA's Bamaga and Cape York are RA1; allowing civilian pilots to flight plan through, and under normal circumstances expect access.

A military controlling authority using the call sign 'Bamaga Radio' will be located at Northern Peninsula Airport to facilitate civilian access through the TRA's, as required. The military controlling authority will not provide an Air Traffic Service (ATS), however, they will ensure military activity is clear of approved civil transits. Transit aircraft within the TRA's will continue to be provided ATS by BN CEN based on extant

airspace classification. Civilian aircraft with a declared emergency, radio failure or participating in activities for the preservation of life or property (SAR, MEDEVAC, POL or FFR) will be afforded priority.

The use of Northern Peninsula Airport will remain available for civilian use and the military will avoid overflight of populated/inhabited areas, particularly concentrated areas around Bamaga, Seisia and populated islands in Torres Strait.

Refer to the attached AIP SUP draft for procedures to access TRA's.

PROPOSAL

JACC is seeking feedback no later than 21st May 2020 on the proposed TRA's as depicted in Figures 1 and 2.

YBBB/TRA Bamaga

Conditional Status: RA1

Military Flying

Lateral Limits: 5NM radius centre 105703S 1422734E (YNPE/AD)

Vertical Limits: SFC - 6000

Hours of Activity: NOTAM

Controlling Authority: Bamaga Radio

YBBB/TRA Cape York

Conditional Status: RA1

Military Flying

Lateral Limits: 095019S 1415444E – 094757S 1415643E – 094557S 1415957E – 094201S 1422258E – 093938S 1430724E – 110734S 1430720E – 110734S 1415131E – 100002S 1415131E – 095449S 1415253E – 095019S 1415444E

Vertical Limits: 6000 - FL130

Hours of Activity: NOTAM

Controlling Authority: Bamaga Radio.

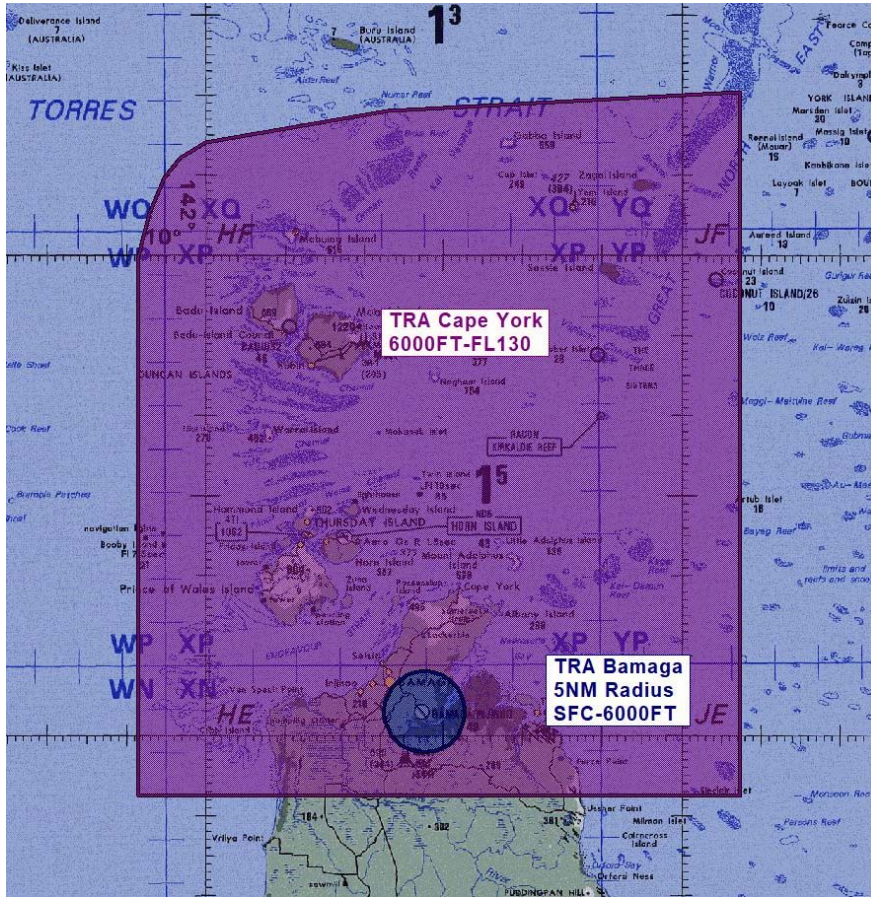


Figure 1. TRA's Bamaga and Cape York

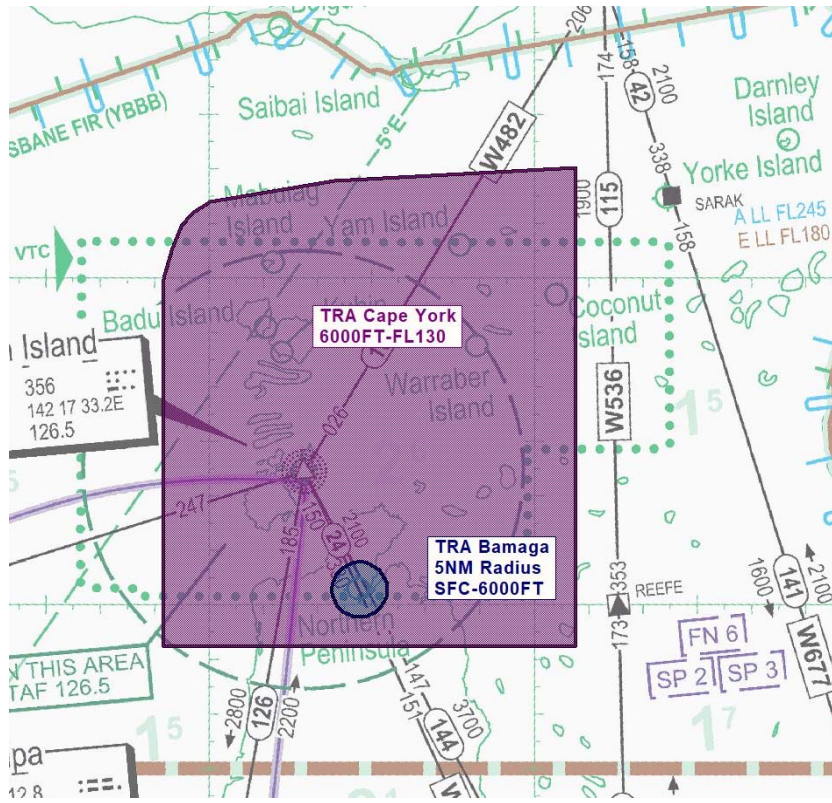


Figure 2. TRA's Bamaga and Cape York overlaid on Enroute Low.