

23 March 2021, Version 1  
Airspace Users

## **ATTENTION PILOTS – PROPOSED BVLOS REMOTELY PILOTED AIRCRAFT OPERATIONS, CENTRAL HIGHLANDS REGION, QLD – MAY or JUNE**

Dear Central Highlands Region Airspace Users,

[Insitu Pacific Pty Ltd](#) is proposing to undertake aerial survey operations in the Central Highlands Region between Rolleston and an area south of Middlemount over a two week period in the May – June timeframe.

Operations will be conducted beyond visual line of sight of the operating crew and up to 4000 feet AMSL. Launch and recovery will initially be from Rolleston aerodrome (YRLL) and then from St Aubins Station ALA near Comet township. The proposed area excludes RPA operations within 10NM of Emerald aerodrome (YEML). Operational procedures will ensure the RPA does not conflict with aircraft utilising Emerald instrument approach procedures during transit to survey areas. See map below or [web link](#).

The RPA is a fixed wing aircraft with a wingspan of approximately 3 metres. It is equipped with a Mode S transponder and a barometric altimeter. The aircraft is fitted with strobe, beacon and navigation lights. RPA pilots will monitor and make VHF position reports on Emerald CTAF / Rolleston CTAF / Multicom (126.7) and BN CEN frequency (122.3). Remote pilots will respond to any traffic with position and intentions and engage in procedural de-confliction whenever necessary.

Conventionally piloted aircraft equipped with ADS-B, electronic conspicuity (EC), Mode C transponders or pilots that use the OzRunways EFB will be displayed on the remote pilot station through the use of ground based situational awareness tools. Establishing two-way VHF communications with applicable traffic is the primary tool for de-confliction and separation assurance with other air users.

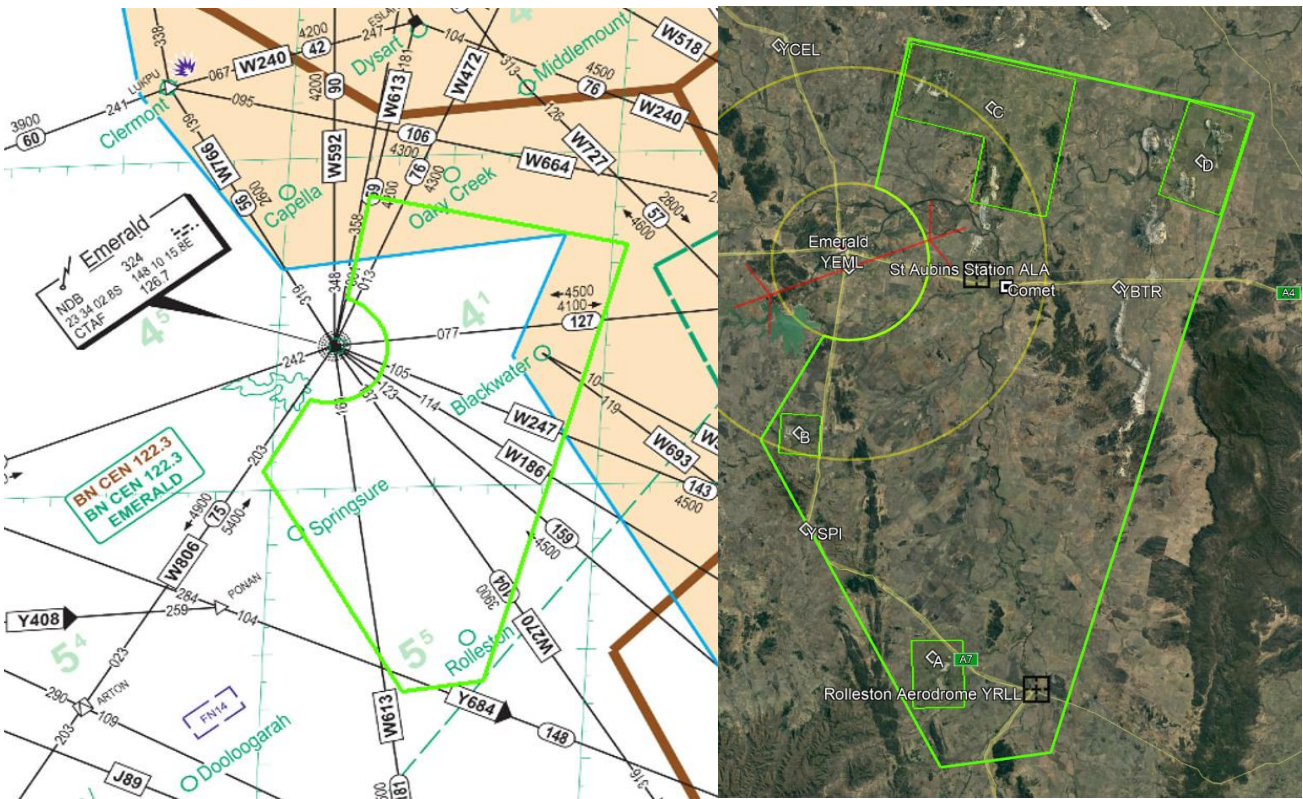
Up to two RPA may be airborne simultaneously and the aircraft may be operating in different survey areas.

All RPA operations are conducted in accordance with CASR Part 101, and the conditions of a CASA UAV Area Approval (101.030). For more information or details, please contact the Insitu Pacific Chief Pilot by email or the phone number in the RPA NOTAM (when published).

**Rhys Mudford**  
Chief Pilot  
Insitu Pacific Pty Ltd  
Email: [rhys.mudford@insitupacific.com](mailto:rhys.mudford@insitupacific.com) (M) 0430 186 862



**Survey RPA - Callsign Unmanned Laser – 3 metre wingspan, cruise speed 45 kts**



**Proposed RPA area of operation SFC - 4000FT AMSL. Launch and recovery from Rolleston aerodrome or St Aubins Station near Comet. Planned aerial survey areas marked A – D.**