

19 March 2021, Version 3
Airspace Users

ATTENTION PILOTS – BVLOS REMOTELY PILOTED AIRCRAFT OPERATIONS COOMINYA QLD

Dear South East Queensland Airspace Users,

[Insitu Pacific Pty Ltd](http://www.insitupacific.com) regularly conducts Beyond Visual Line of Sight (BVLOS) Remotely Piloted Aircraft operations from Coominya (YBCM) aerodrome with fixed wing RPA (approximately 3.1m wingspan).

Operations are conducted BVLOS when outside of the Coominya circuit area and up 4500FT AMSL. The typical area of operation is north of Coominya in the vicinity of Lake Wivenhoe (see attached map or [link](#)). A NOTAM will cover all periods of the RPA operation.

The RPA are transponder equipped and operated in accordance with barometric altimeter settings. The aircraft are fitted with strobes and navigation lights. RPA pilots will broadcast on Coominya CTAF (126.7) and monitor Brisbane Centre (121.20) and Amberley Clearance Delivery (134.6).

Regular broadcasts are made to prompt the initiation of two-way VHF communications with other airspace users. RPA pilots will respond to any traffic with position and intentions and engage in procedural de-confliction whenever necessary. Conventional airspace users have right of way.

Aircraft equipped with ADS-B, EC or Mode C transponders may be visible to ScanEagle operators through utilisation of ground based tools at the control station. VHF communications is the primary source for the RPA pilot to maintain airspace situational awareness and conduct de-confliction with other air users.

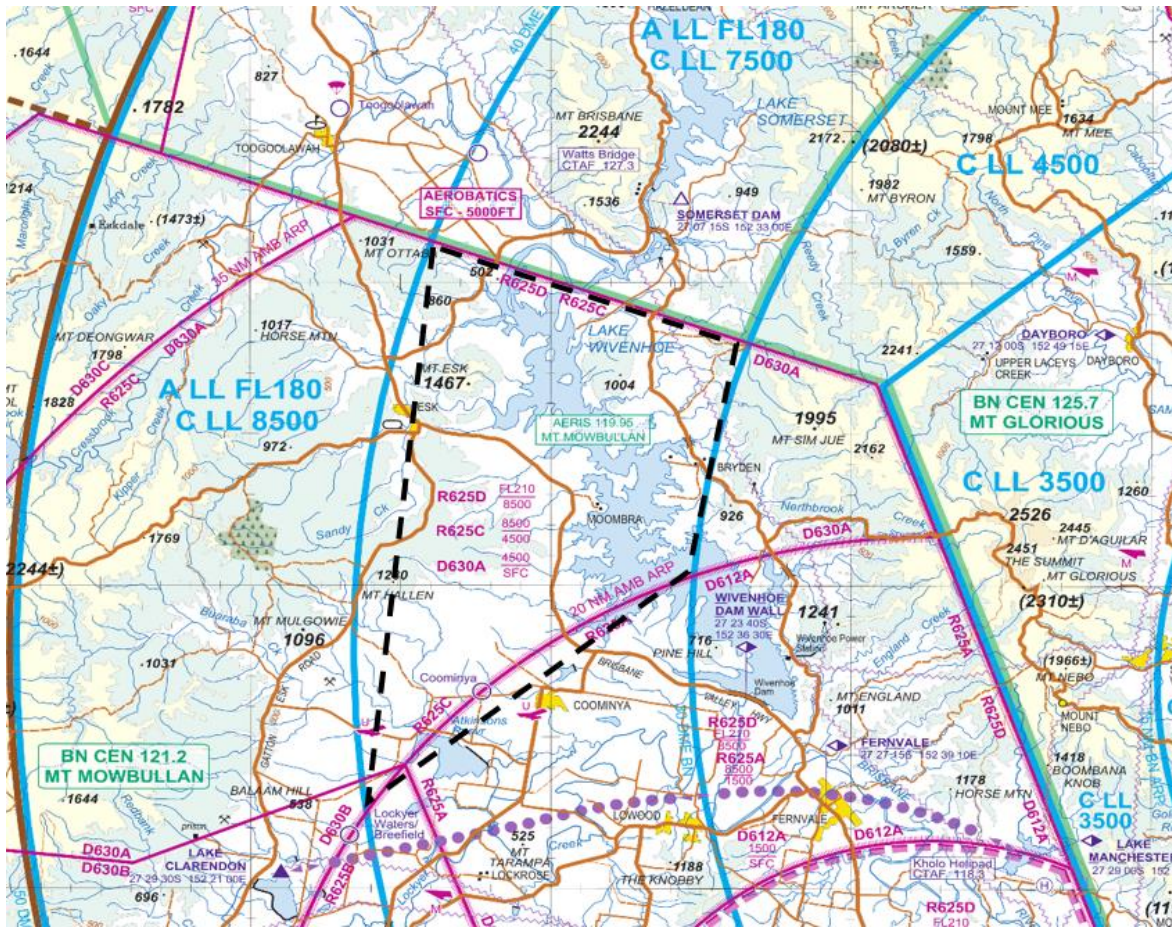
All RPA operations are conducted in accordance with CASR Part 101, and the conditions of a CASA UAV Area Approval (101.030).

For more information or details, please contact the Insitu Pacific Chief Pilot by email or the phone number in the RPA NOTAM.

Rhys Mudford
Chief Pilot
Insitu Pacific Pty Ltd
Email: rhys.mudford@insitupacific.com (M) 0430 186 862



ScanEagle RPA (left) and CT220 RPA (right) – 3.1 metre wingspan, cruise speed 45 – 60 kts



Fixed Wing RPA operating area up to 4500FT AMSL. Launch & recovery operations from Coominya aerodrome.

NOTAM EXAMPLE

UA (22KG FIXED WING, WHITE AND ORANGE)
 OPR WI 7NM EITHER SIDE OF A LINE BETWEEN PSN 272330S 1522742E COOMINYA AD (YBCM)
 AND 271000S 1523000E BRG 140 MAG 4.5NM FM WATTS BRIDGE AD (YWSG)
 OPR WILL BROADCAST ON COOMINYA COMMON TFC ADVISORY FREQ (CTAF) 126.7
 AND BRISBANE CENTRE 121.2
 OPR INSITU PACIFIC CTC TEL: 0430 189 862
 SFC TO 4500FT AMSL
 FROM XX XXXXXX TO XX XXXXXX
 HJ