

AVIATION STATE ENGAGEMENT FORUM

Queensland

Submission date: 31/03/2021

TITLE	Military Exercise ‘Talisman Sabre’, Scherger/Weipa
SUBMITTED BY	Ben Chaffey – Joint Airspace Control Cell: adf.airspace@defence.gov.au
CONSULTATION SUMMARY	To seek members feedback on the airspace and procedures for Exercise TALISMAN SABRE 2021, specifically to be employed at RAAF Scherger and Weipa
KEY ISSUES	<ul style="list-style-type: none"> • Activation of TRA Scherger around RAAF Scherger in lieu of Scherger Control Zone (CTR) • RAAF ATC at Scherger providing a Flight Information Service (FIS) • Access available through TRA on request • No impact to published routes
FEEDBACK TO	FOR ATTENTION: Ben Chaffey – Joint Airspace Control Cell (JACC): adf.airspace@defence.gov.au
CLOSE DATE	20 Apr 21
ATTACHMENTS	Draft AIP SUP – Ex Talisman Sabre 2021 – Scherger

OVERVIEW

Elements of the Australian Defence Force (ADF) will be conducting Exercise ‘TALISMAN SABRE 2021 (TS21)’ over the period 16 – 31 July 2021.

TS21 is a large scale military activity, involving a wide range of tactical flying activities across Queensland, with aircraft operating from Scherger over several days.

Intention is to activate a Temporary Restricted Area (TRA) encompassing RAAF Scherger operations, vice activating the entire CTR which would impose restrictions in traffic operating from Weipa. RAAF Air Traffic Control (ATC) will be providing a flight information service (FIS) within the TRA for any transiting aircraft.

PROPOSAL

- Airspace

- The following Temporary Restricted Area (TRA) are established for the purposes of TS21:

TRA Scherger

Conditional Status: RA1

Military Flying

Lateral Limits: 122244S 1420145E, 123555s 1420015E, then along the clockwise arc of a circle of 5.00NM radius centred on 123726S 1420514E (YBSG/AD) to 124156S 1420240E, 125051S 14201148E, thence along the counter clockwise arc of 15NM radius centred on 123726S 1420514E (YBSG/AD) to 122244S 1420145E.

Vertical Limits: SFC – 4,000FT

Hours of Activity: NOTAM

Controlling Authority: Scherger Tower

- Access to TRA Scherger

- During NOTAM activation periods, access by non-exercise aircraft within the TRA SCHERGER (SFC-4000) will be available. Procedures will be highlighted in the AIP SUP.
- Clearances through TRA Scherger, when available, will be provided by Scherger Tower. Emergency access requests are to be directed to SGR ATC via phone numbers listed in activation NOTAM. Brisbane Centre (BN CEN) will only coordinate requests from

- Procedures
 - o SGR ATC shall only provide a Flight Information Service (FIS) to aircraft within TRA Scherger during activation periods. Aircraft requesting to transit the TRA, shall contact Scherger Tower.
 - o Normal CTAF Procedures remain in place for aircraft operating at Weipa.
 - o VHF frequencies for TRA Scherger and SGR ATC will be published via the airspace activation NOTAM.

1. TRA SCHERGER

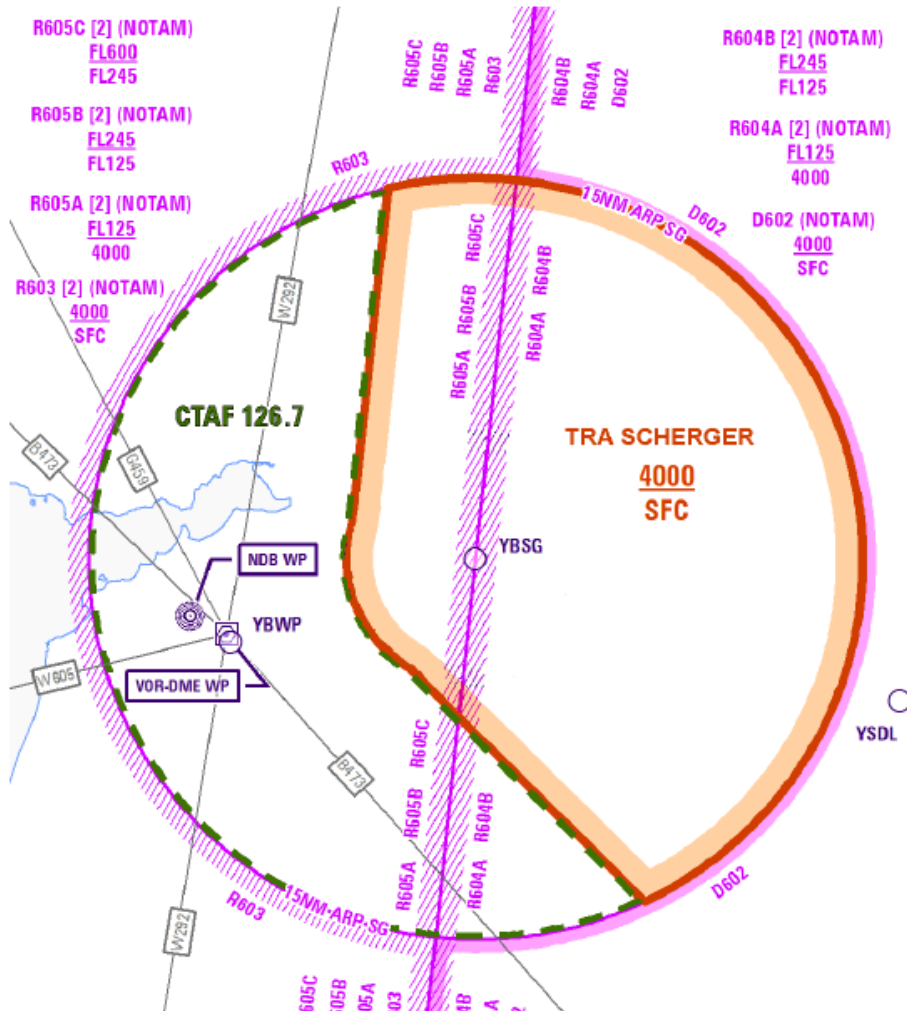


Figure 1. TRA Scherger.

JACC is seeking feedback no later than 20 Apr 21.