

AVIATION STATE ENGAGEMENT FORUM

QUEENSLAND

Submission date: 19/03/2021

TITLE	Coominya RPAS Operations
SUBMITTED BY	Rhys Mudford – Insitu Pacific – Chief Remote Pilot: rhys.mudford@insitupacific.com
CONSULTATION SUMMARY	To raise awareness and seek feedback on RPAS operations in the Coominya area.
KEY ISSUES	<ul style="list-style-type: none">• Renewal of BVLOS RPAS operational approval SFC – 4500 feet• Launch and recovery from Coominya aerodrome• Potential for several RPA to be airborne at a time
FEEDBACK TO	Rhys Mudford – Insitu Pacific – Chief Remote Pilot: rhys.mudford@insitupacific.com
CLOSE DATE	30 April 2021
ATTACHMENTS	<ol style="list-style-type: none">1. Link to map2. RPA Operations Coominya handout.pdf

OVERVIEW

Insitu Pacific has been conducting fixed wing BVLOS RPAS operations from Coominya (YBCM) aerodrome since 2015 for the purpose of training, demonstration and system development. We are currently seeking renewal of the approved area with CASA, and welcome stakeholder feedback from airspace users operating in the area.

Operations are conducted beyond visual line of sight of the operating crew and up to 4500 feet AMSL. The approved area extends approximately 13NM north of Coominya aerodrome. All operations are conducted in Class G airspace. See map below or [web link](#).

The RPA are equipped with a transponder, strobe and navigation lights. RPA pilots monitor and make VHF broadcasts on Coominya CTAF / Multicom (126.7), Brisbane Centre (121.2) and Watts Bridge CTAF (127.3) if applicable. Remote pilots will respond to any traffic with position and intentions and engage in procedural de-confliction whenever necessary.

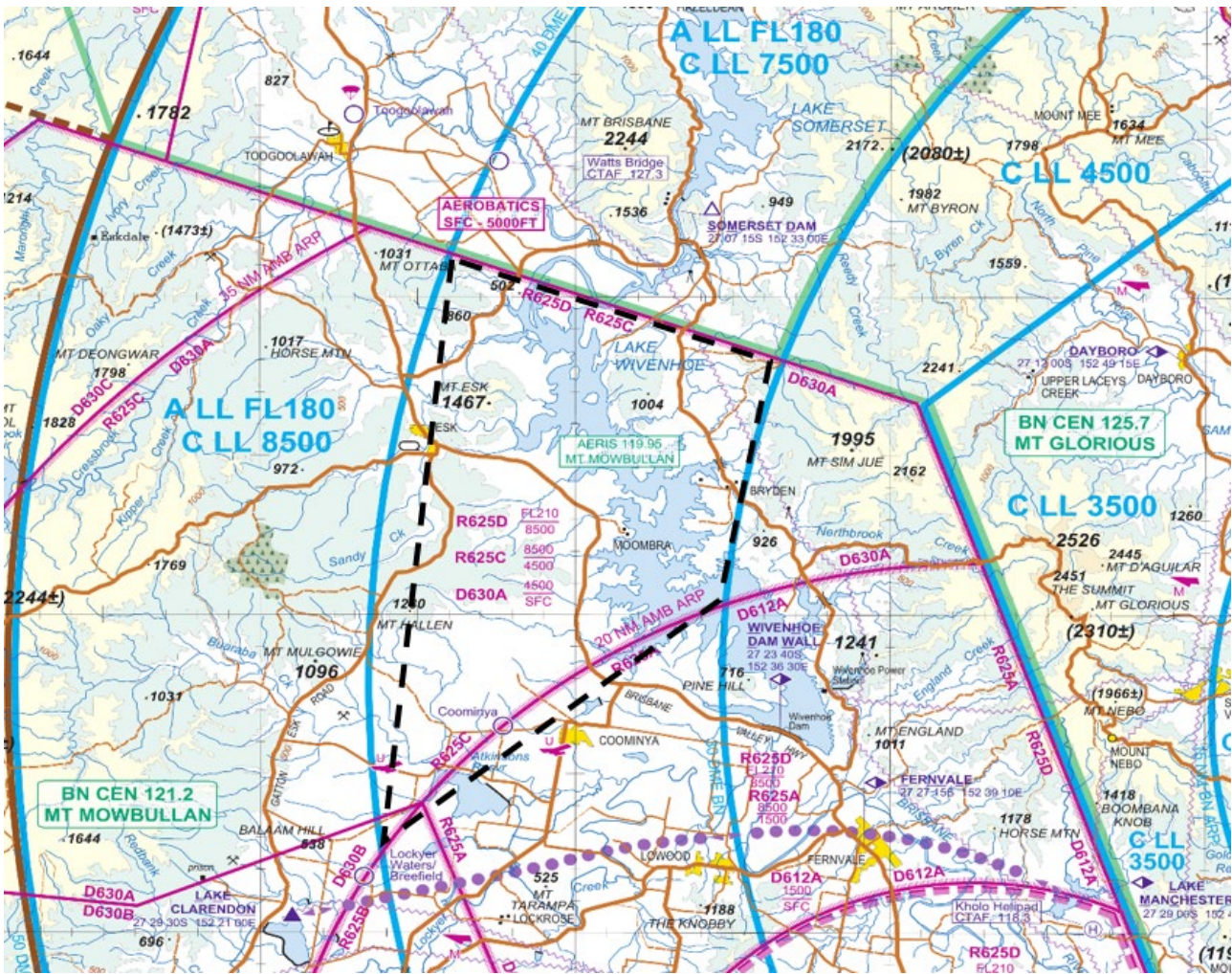
Conventional aircraft equipped with ADS-B, electronic conspicuity (EC), Mode C transponders or pilots that use the OzRunways EFB will be displayed on the remote pilot station through the use of ground based situational awareness tools. Direct pilot to pilot VHF communications is the primary tool to ensure separation with other air users.

Fixed wing RPA with a wingspan of approximately 3 metres are presently in use. Multiple aircraft may be operated simultaneously on occasion.

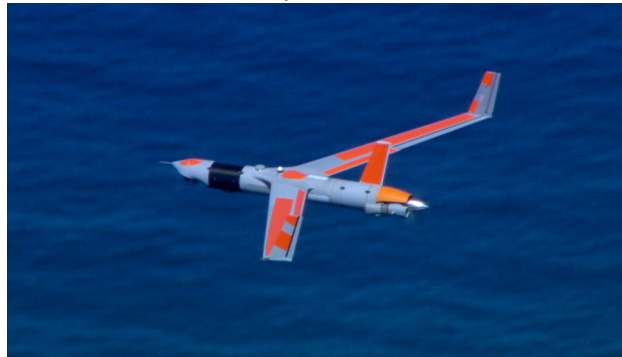
RPA operations are most commonly conducted during daylight hours and on week days. A NOTAM is raised to cover all periods of operation and will highlight operations during other times.

PROPOSAL

This information is provided to raise awareness of the BVLOS RPA operations that are presently conducted in the Coominya area. It provides an opportunity for airspace users to seek further information or raise any safety or operational concerns.



RPA area of operation (dashed black). SFC – 4500 feet AMSL. Launch and recovery conducted from Coominya aerodrome



Callsign Unmanned ScanEagle – 3 metre wingspan, cruise speed approximately 55 knots



Callsign Unmanned Laser - 3 metre wingspan, cruise speed approximately 45 knots