

## AVIATION STATE ENGAGEMENT FORUM

### Queensland & NSW

Submission date: 7/12/2020

<b>TITLE</b>	<b>Beyond the Blue Aerospace (BTBA) rocket launching</b>
<b>SUBMITTED BY</b>	Alex Dallwitz – Office of Airspace Regulation (OAR): <a href="mailto:oar@casa.gov.au">oar@casa.gov.au</a>
<b>CONSULTATION SUMMARY</b>	To seek members feedback on the proposal to establish two temporary restricted areas (TRAs) due to high level rocket launching activity
<b>KEY ISSUES</b>	<ul style="list-style-type: none"> <li>• Rocket launching activity from 19 – 20 December 2020</li> <li>• Two TRAs proposed with separate Controlling Authorities</li> </ul>
<b>FEEDBACK TO</b>	Alex Dallwitz – OAR: <a href="mailto:oar@casa.gov.au">oar@casa.gov.au</a>
<b>CLOSE DATE</b>	17 December 2020
<b>ATTACHMENTS</b>	Nil

#### OVERVIEW

BTBA, a hobby rocketry organisation, is seeking to conduct rocket launching activity approximately 40NM NW Goondiwindi, Qld from 19 – 20 December 2020. Please note the OAR is unsure whether the activity can proceed and apologises for the late notice to AvSEF members. AvSEF members should check NOTAMs closer to the date to confirm whether the activity is proceeding.

The proponent has already conducted preliminary consultation regarding the activity with known airspace users and other stakeholders. Now the OAR is consulting with AvSEF members regarding the proposed TRAs. Rocket launches from this location have been consulted with members many times previously.

Two rocket launches to an apogee of FL400 are proposed in launch windows from 1400 – 1500 (local) on 19 December 0830 – 0930 and 1200 – 1300 (local) on 20 December. These multiple windows are sought due to possible delays with the flights.

As part of procedures at this site, contact is made with Airservices at least 30 minutes prior to the first flight of a rocket intended to be launched into controlled airspace to confirm activation of the TRA and that no objection to the timing of the launch exists.

#### PROPOSAL

To mitigate residual airspace risks posed by the activity a TRA is proposed from SFC to FL125 within Class G airspace and another from FL125 to FL450 in the controlled airspace above.

##### TRA Funny Farm Class G

**Lateral Limits:** 9NM radius of 280742S 1494206E

**Vertical Limits:** SFC to FL125

**Controlling Authority:** BTBA

##### TRA Funny Farm CTA

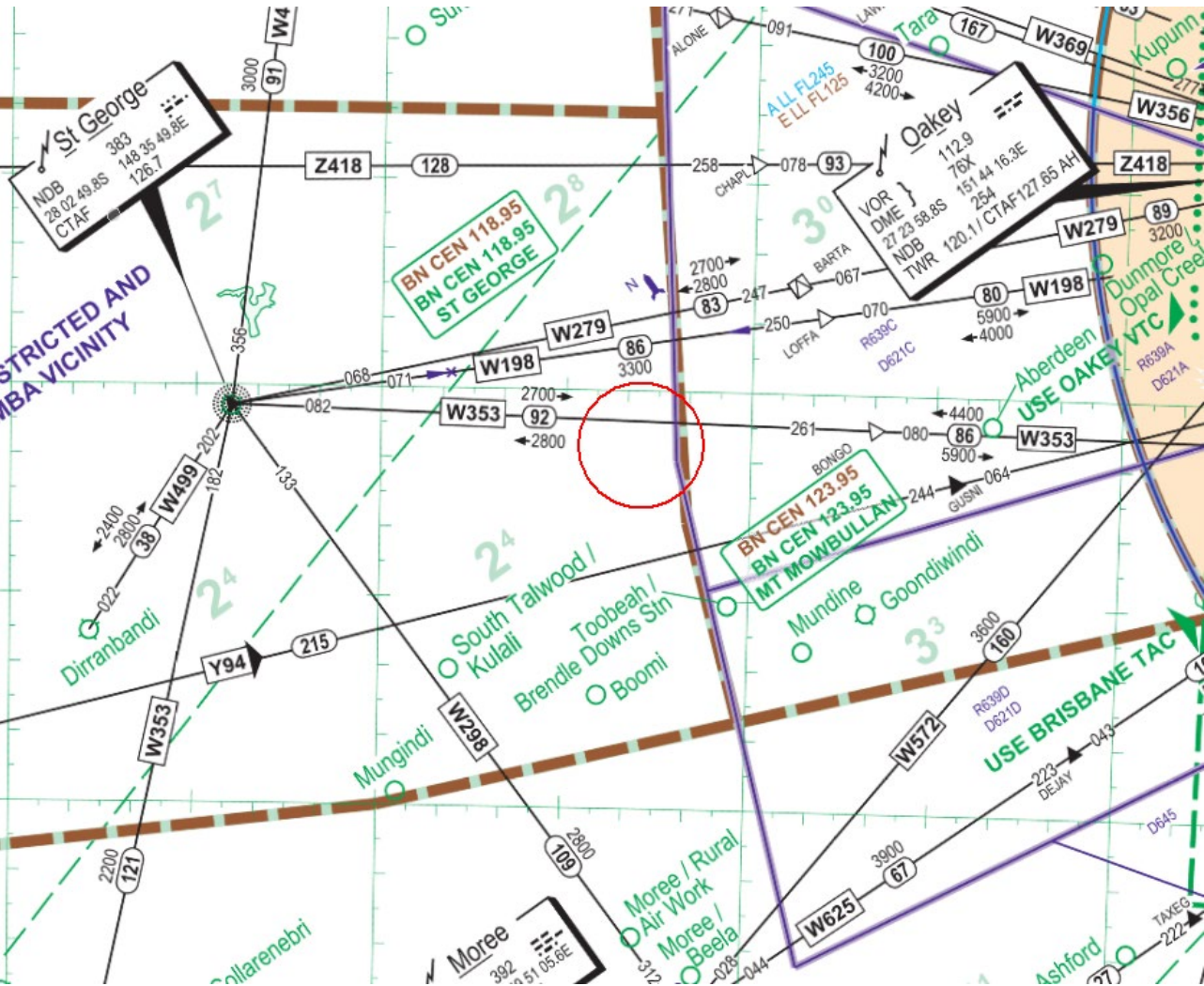
**Lateral Limits:** 9NM radius of 280742S 1494206E

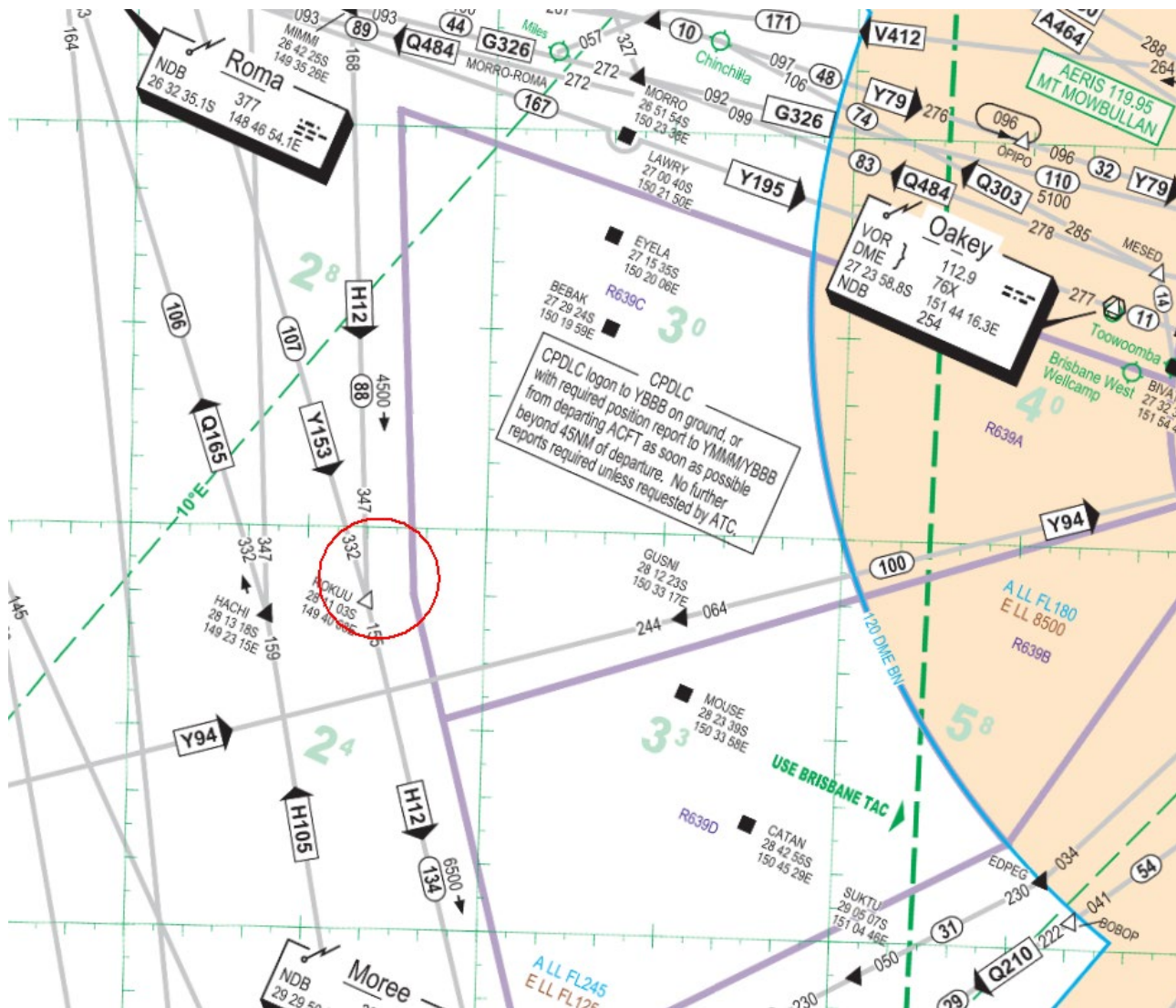
**Vertical Limits:** FL125 to FL450

**Controlling Authority:** Airservices BN OPS MGR

Illustrations of the proposed TRAs are below:

ERC Low





If any stakeholder has input in relation to the following, please provide feedback as this will ensure the OAR considers such issues during the assessment process:

- Safety
- Environment
- National security
- Equity of airspace
- Any activities scheduled for the same volume of airspace over the same period